

ROHS TECHNICAL CONSTRUCTION FILES

Product : UV Sterilizer Lamp

Trade Mark: : N/A

Models : /6649

Applicant :

Address :

Manufacturer :

Address :

Report No. : SCT20200514021R1

Issue Date : 2020-5-09 to 2020-5-14

Authorized by : Shenzhen SCT-CERT Technology Co., Ltd.
Add:2 / F, Chuangye Building, Ant Think Tank, 92 Ruyi Road, Longgang
District, Shenzhen,Guangdong, China

Applicant:
Address:

Report on the submitted sample said to be:

Sample name: UV Sterilizer Lamp
Model: /6649

Item/Lot No.: /
Material: /plastic & metal
Buyer: /
Supplier: /
Manufacturer:

Sample received date: May 09,2020
Testing period: From 2020-5-09 to 2020-5-14

Testing method:

EU RoHS Directive 2011/65/EU and its
amendment directives 2015/863/EU (RoHS 2.0)
on Lead, Cadmium, Mercury, Hexavalent
Chromium, PBBs, PBDEs, DEHP, BBP, DBP &
DIBP content

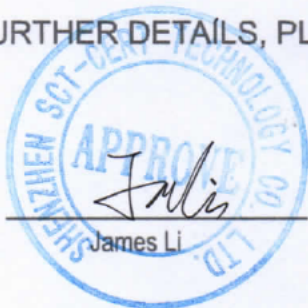
IEC62321-4-2013+A1:2017 IEC 62321-5-2013 IEC 62321-7-2-2017
IEC 62321-6-2015
IEC62321-8-2017

Conclusion:

<u>Tested samples</u>	<u>Standard</u>	<u>Result</u>
Screening components of submitted samples	Chemical confirmation test for RoHS directive (2011/65/EU and (EU) 2015/863)	PASS

*****FOR FURTHER DETAILS, PLEASE REFER TO THE FOLLOWING PAGE(S)*****

Tested by:



Approved by:



Seq. No.	Tested Part(s)		
1	White plastic		
2	White plastic wire		
3	Black plastic		
4	Blue plastic wire		
5	Black plastic wire		
6	Green plastic wire		
7	Blue tape		
8	PCB		
9	Black casing		
10	Solder		
11	Copper wire		
12	Iron wire		
13	Iron sheets		
14	Copper		
15	Glass tube		
16	Skeleton		

Test Results:

Test Item(s):	RESULT								MDL
	1	2	3	4	5	6	7	9	
Cadmium(Cd)	N.D	N.D	N.D	N.D	N.D	N.D	N.D	N.D	2
Lead(Pb)	N.D	N.D	N.D	N.D	N.D	N.D	N.D	N.D	2
Mercury(Hg)	N.D	N.D	N.D	N.D	N.D	N.D	N.D	N.D	2
Hexavalent Chromium Cr(VI) by alkaline extraction	N.D	N.D	N.D	N.D	N.D	N.D	N.D	N.D	8
Sum of PBBs	N.D	N.D	N.D	N.D	N.D	N.D	N.D	N.D	—
Monobromo biphenyl	N.D	N.D	N.D	N.D	N.D	N.D	N.D	N.D	5
Dibromo biphenyl	N.D	N.D	N.D	N.D	N.D	N.D	N.D	N.D	5
Tribromo biphenyl	N.D	N.D	N.D	N.D	N.D	N.D	N.D	N.D	5
Tetrabromo biphenyl	N.D	N.D	N.D	N.D	N.D	N.D	N.D	N.D	5
Pentabromo biphenyl	N.D	N.D	N.D	N.D	N.D	N.D	N.D	N.D	5
Hexabromo biphenyl	N.D	N.D	N.D	N.D	N.D	N.D	N.D	N.D	5
Heptabromo biphenyl	N.D	N.D	N.D	N.D	N.D	N.D	N.D	N.D	5
Octabromo biphenyl	N.D	N.D	N.D	N.D	N.D	N.D	N.D	N.D	5
Nonabromo biphenyl	N.D	N.D	N.D	N.D	N.D	N.D	N.D	N.D	5
Decabromo biphenyl	N.D	N.D	N.D	N.D	N.D	N.D	N.D	N.D	5
Sum of PBDEs	N.D	N.D	N.D	N.D	N.D	N.D	N.D	N.D	—
Monobromobiphenyl ether	N.D	N.D	N.D	N.D	N.D	N.D	N.D	N.D	5
Dibromobiphenyl ether	N.D	N.D	N.D	N.D	N.D	N.D	N.D	N.D	5
Tribromobiphenyl ether	N.D	N.D	N.D	N.D	N.D	N.D	N.D	N.D	5
Tetrabromobiphenyl ether	N.D	N.D	N.D	N.D	N.D	N.D	N.D	N.D	5
Pentabromobiphenyl ether	N.D	N.D	N.D	N.D	N.D	N.D	N.D	N.D	5
Hexabromobiphenyl ether	N.D	N.D	N.D	N.D	N.D	N.D	N.D	N.D	5
Heptabromobiphenyl ether	N.D	N.D	N.D	N.D	N.D	N.D	N.D	N.D	5
Octabromobiphenyl ether	N.D	N.D	N.D	N.D	N.D	N.D	N.D	N.D	5
Nonabromobiphenyl ether	N.D	N.D	N.D	N.D	N.D	N.D	N.D	N.D	5
Decabromobiphenyl ether	N.D	N.D	N.D	N.D	N.D	N.D	N.D	N.D	5
Dibutyl Phthalate(DBP)	N.D	N.D	N.D	N.D	N.D	N.D	N.D	N.D	50
Benzyl butyl phthalate (BBP)	N.D	N.D	N.D	N.D	N.D	N.D	N.D	N.D	50
Bis-(2-ethylhexyl)-Phthalate (DEHP)	N.D	N.D	N.D	N.D	N.D	N.D	N.D	N.D	50
Diisobutyl Phthalate(DIBP)	N.D	N.D	N.D	N.D	N.D	N.D	N.D	N.D	50

Test Item(s):	RESULT								MDL
	10	11	12	13	14	15	16		
Cadmium(Cd)	N.D	N.D	N.D	N.D	N.D	N.D	N.D		2
Lead(Pb)	N.D	N.D	N.D	N.D	N.D	N.D	N.D		2
Mercury(Hg)	N.D	N.D	N.D	N.D	N.D	N.D	N.D		2
Hexavalent Chromium Cr(VI) by alkaline extraction	N.D	N.D	N.D	N.D	N.D	N.D	N.D		8
Sum of PBBs									—
Monobromo biphenyl									5
Dibromo biphenyl									5
Tribromo biphenyl									5
Tetrabromo biphenyl									5
Pentabromo biphenyl									5
Hexabromo biphenyl									5
Heptabromo biphenyl									5
Octabromo biphenyl									5
Nonabromo biphenyl									5
Decabromo biphenyl									5
Sum of PBDEs									—
Monobromobiphenyl ether									5
Dibromobiphenyl ether									5
Tribromobiphenyl ether									5
Tetrabromobiphenyl ether									5
Pentabromobiphenyl ether									5
Hexabromobiphenyl ether									5
Heptabromobiphenyl ether									5
Octabromobiphenyl ether									5
Nonabromobiphenyl ether									5
Decabromobiphenyl ether									5
Dibutyl Phthalate(DBP)									50
Benzyl butyl phthalate (BBP)									50
Bis-(2-ethylhexyl)-Phthalate (DEHP)									50
Diisobutyl Phthalate(DIBP)									50

Remark:

-Specimens, which requested to determine Cadmium, Mercury and Lead Content by chemical test, have been dissolved completely.

- mg/kg = ppm

- N.D.=not detected(<MDL)

- MDL=Method Detection Limit

- N.A.= Not Applicable

- BL= BELOW LIMIT

- OL= OVER LIMIT

- **Boiling water extraction:

Negative=Absence of Cr(VI);

Positive=Presence of Cr(VI);the detected concentration in boiling water extraction solution is equal or greater than 0.02mg/kg with 50c5305 sample surface area.

- Storage conditions and production date of the tested sample are unavailable and thus results of Cr(VI) represent status of the sample at the time of testing.

(#1) = The screening result was found in the region of inconclusive (See Table B) and further chemical tests were suggested.

(#2) = Cr or Br were detected above the screening Limit (see table B) and further chemical tests were suggested.

Remark

The maximum permissible limit is quoted from RoHS directive 2011/65/EC:

RoHS Requirement(mg/kg) :

Restricted substances	Cd	Pb	Hg	Cr(VI)	PBBs	PBDEs	BBP	DBP	DEHP	DIBP
RoHS limit	100	1000	1000	1000	1000	1000	1000	1000	1000	1000

Remark:

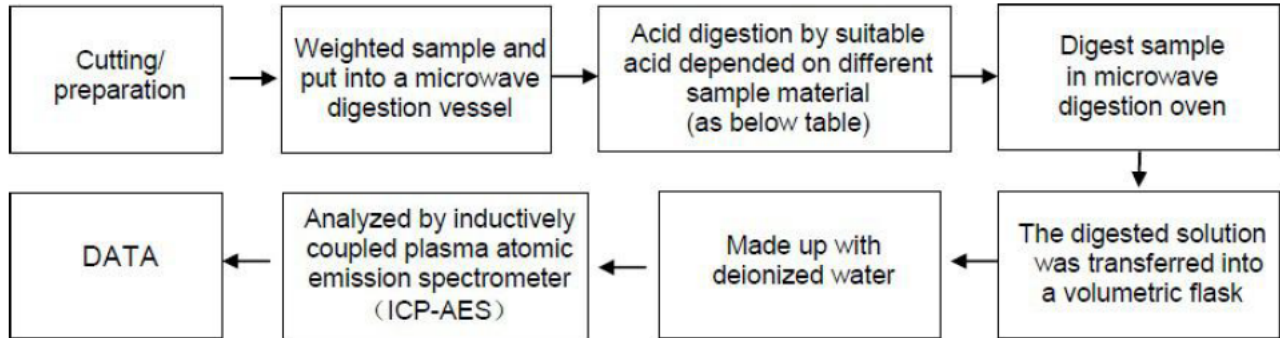
-Chemical confirmation tests were conducted to verify the inconclusive results, Chromium(VI)(Cr⁶⁺), Polybrominated biphenyls(PBBs) and Polybrominated diphenyl ethers(PBDEs) content.

Appendix

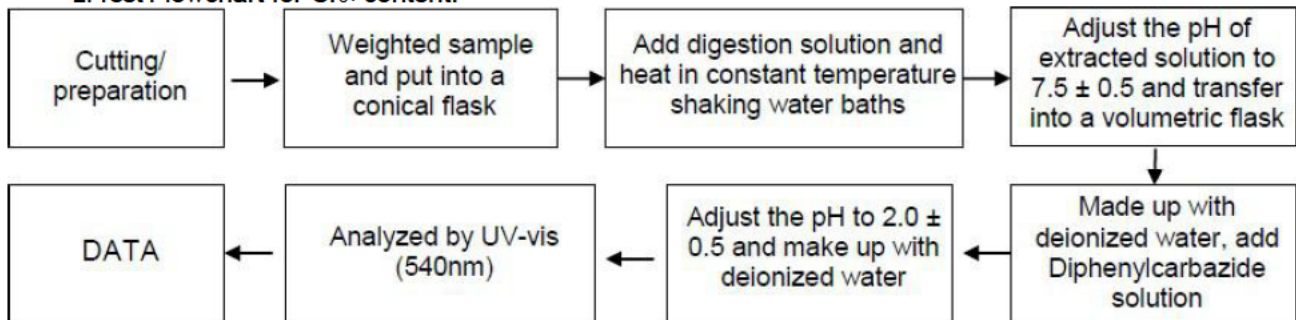
Test Flow chart:

1. Test Flowchart for Cd / Pb /Hg content

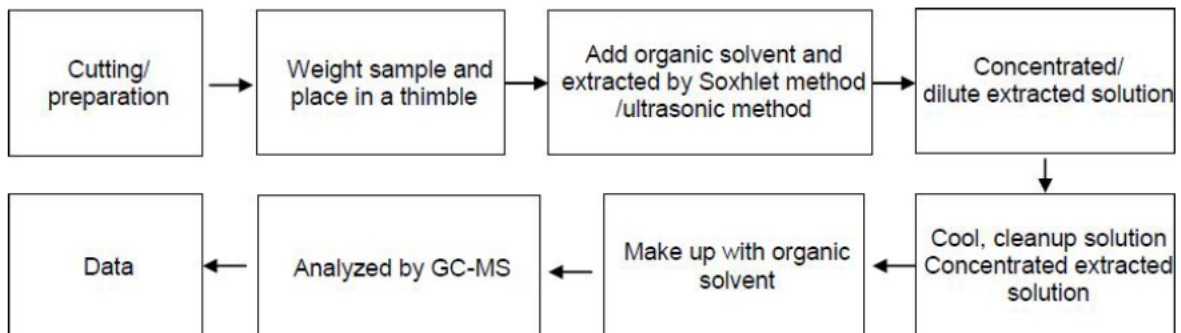
These samples were dissolved totally by pre-conditioning method according to below flow chart.



2. Test Flowchart for Cr₆₊ content:



3. Test Flowchart for PBBs & PBDEs content:



4. Test Flowchart for DEHP, BBP, DBP & DIBP content:

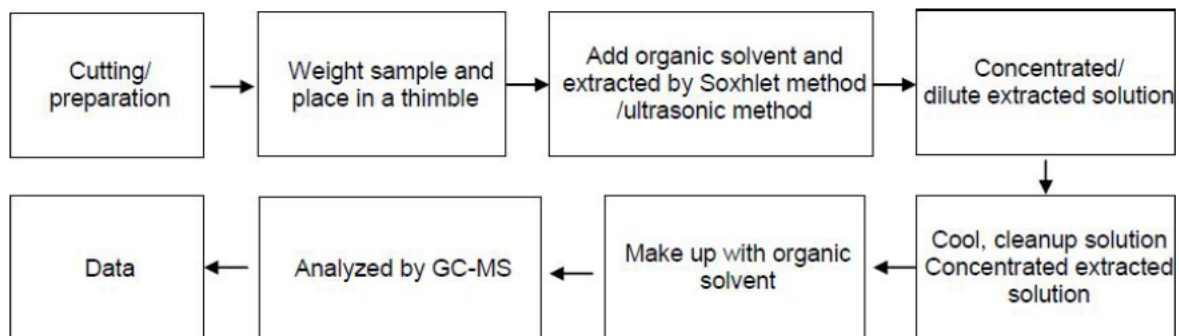


Table:

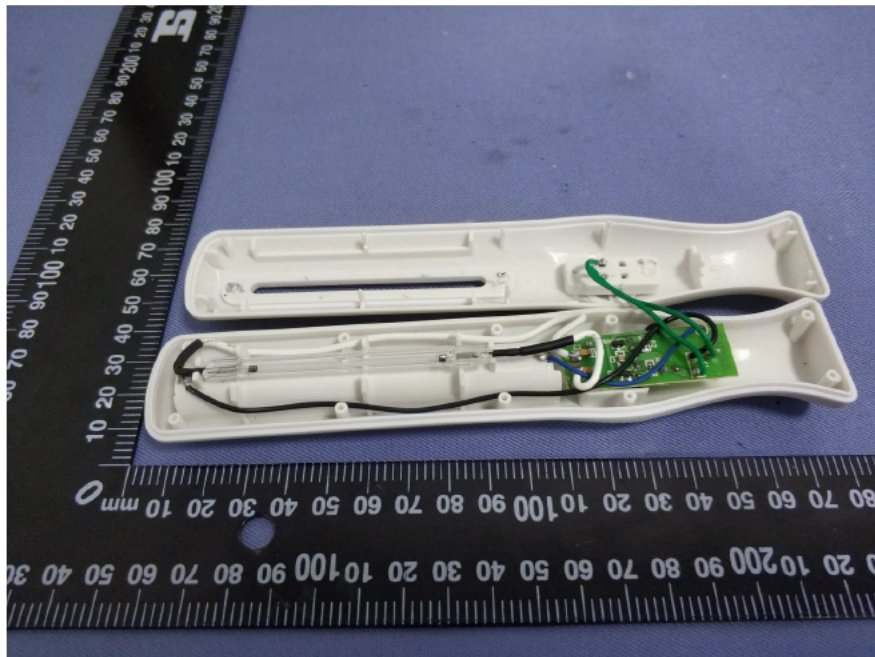
Sample material	Digestion Acid
Steel, copper, aluminum, solder	Aqua regia, HNO ₃ , HCl, HF, H ₂ O ₂
Glass	HNO ₃ /HF
Gold, platinum, palladium, ceramic	Aqua regia
Silver	HNO ₃
Plastic	H ₂ SO ₄ , H ₂ O ₂ , HNO ₃ , HCl
Others	Any acid to total digestion

Photographs of Samples

Photo.1



Photo.2



End of Report